



Approximation with Certain Genuine Hybrid Operators

Vijay Gupta^a, Th. M. Rassias^b, P. N. Agrawal^c, Meenu Goyal^c

^aDepartment of Mathematics, Netaji Subhas Institute of Technology, Sector 3, Dwarka, New Delhi 110078, India

^bDepartment of Mathematics, National Technical University of Athens, Zografou Campus, 157 80, Athens, Greece

^cDepartment of Mathematics, Indian Institute of Technology Roorkee, Roorkee-247667, India

Abstract. In the present article, we introduce a general sequence of summation-integral type operators. We establish some direct results which include Voronovskaja type asymptotic formula, point-wise convergence for derivatives, error estimations in terms of modulus of continuity and weighted approximation for these operators. Furthermore, the convergence of these operators and their first order derivatives to certain functions and their corresponding derivatives respectively is illustrated by graphics using Matlab algorithms for some particular values of the parameters c and ρ .

1. Introduction

In the last five decades, several new operators of integral type have been introduced and their approximation properties were discussed by several researchers. Milovanovic et al. [12] (see also [13], [14]) in their book covered some topics on the behaviour of some polynomials in real and complex domains. In the last decade, q calculus was also applied extensively in the theory of approximation of functions by linear positive operators. Aral, Gupta and Agarwal compiled the results on convergence of various q -operators in their book [4].

Very recently, Gupta and Agarwal [9] and recently Gupta and Tachev [11] also presented convergence estimates of many operators in real and complex domains (see also some of the papers [1], [2], [6], [7], [8]). In continuation of the above work, Păltănea [16] (see also [18]) considered a Durrmeyer type modification of the genuine Szász-Mirakjan operators based on two parameters. Motivated by his modification, we now propose for $f : [0, \infty) \rightarrow \mathbb{R}$, a general hybrid family of summation-integral type operators based on the parameters $\rho > 0$ and $c \in [0, 1]$ in the following way:

$$B_{\alpha}^{\rho}(f; x, c) = \sum_{k=1}^{\infty} p_{\alpha,k}(x, c) \int_0^{\infty} \theta_{\alpha,k}^{\rho}(t) f(t) dt + p_{\alpha,0}(x, c) f(0), \quad (1)$$

where

$$p_{\alpha,k}(x, c) = \frac{(-x)^k}{k!} \phi_{\alpha,c}^{(k)}(x), \quad \theta_{\alpha,k}^{\rho}(t) = \frac{\alpha^{\rho}}{\Gamma(k\rho)} e^{-\alpha t} (\alpha t)^{k\rho-1}.$$

2010 *Mathematics Subject Classification.* Primary 41A25; Secondary 41A30

Keywords. Szász-Mirakjan operators, Baskakov operators, Phillips operators, modulus of continuity, asymptotic formula, error estimations, weighted approximation.

Received: 23 April 2017; Accepted: 07 August 2017

Communicated by Dragan S. Djordjević

Email addresses: vijaygupta2001@hotmail.com (Vijay Gupta), trassias@math.ntua.gr (Th. M. Rassias), pna_iitr@yahoo.co.in (P. N. Agrawal), meenu.goyaliitr@yahoo.com (Meenu Goyal)

For the space defined as:

$$C_\gamma[0, \infty) = \{f \in C[0, \infty) : |f(t)| \leq Ce^{\gamma t}, \text{ for some } \gamma > 0, t \in [0, \infty)\},$$

it is observed that the operators $B_\alpha^\rho(f; x, c)$ are well defined for $\alpha\rho > \gamma$. Further, we note that the operators (1) preserve the linear functions.

Special cases:

1. If $\phi_{\alpha,0}(x) = e^{-\alpha x}$, then $p_{\alpha,k}(x, 0) = e^{-\alpha x} \frac{(\alpha x)^k}{k!}$, we get the operators due to Păltănea [16]. Also, for this case if $\rho = 1$, we get the Phillips operators [17].
2. If $\phi_{\alpha,1}(x) = (1 + x)^{-\alpha}$ and $\alpha = n$, then $p_{\alpha,k}(x, 1) = \frac{(\alpha)_k}{k!} \frac{x^k}{(1 + x)^{\alpha+k}}$, with the rising factorial given by $(n)_i = n(n + 1) \cdots (n + i - 1)$, $(n)_0 = 1$. For $\rho = 1$, we get the operators studied in [3].
3. If $c = 0, \alpha = n$ and $\rho \rightarrow \infty$, then in view of ([18], Theorem 2.2), we get the Szász-Mirakjan operators.
4. Similarly, if $c = 1, \alpha = n, f \in \overline{\Pi}$, the closure of the space of algebraic polynomials in space $C[0, \infty)$ and $\rho \rightarrow \infty$, we obtain at once Baskakov operators.

The aim of the present paper is to discuss some direct results for the generalized operators (1). We obtain asymptotic formula, point-wise convergence for derivatives, error estimations in terms of modulus of continuity and weighted approximation. The convergence of these operators and their first order derivatives is also illustrated by using Matlab algorithms.

2. Basic Results

In the sequel, we need the following lemmas.

Lemma 2.1. For $c = 0, 1$ if the m -th order central moment $\mu_{\alpha,m}(x)$ is defined as

$$\mu_{\alpha,m}(x) := B_\alpha^\rho((t - x)^m; x, c) = \sum_{k=1}^\infty p_{\alpha,k}(x, c) \int_0^\infty \theta_{\alpha,k}^\rho(t)(t - x)^m dt + p_{\alpha,0}(x, c)(-x)^m,$$

then, $\mu_{\alpha,0}(x) = 1, \mu_{\alpha,1}(x) = 0$ and there holds the following recurrence relation:

$$\alpha\mu_{\alpha,m+1}(x) = x(1 + cx)\mu'_{\alpha,m}(x) + mx \left[\frac{1}{\rho} + (1 + cx) \right] \mu_{\alpha,m-1}(x) + \frac{m}{\rho} \mu_{\alpha,m}(x).$$

Consequently,

- (i) $\mu_{\alpha,m}(x)$ is a polynomial in x of degree atmost m depending on the parameters c and α ;
- (ii) for every $x \in (0, \infty), \mu_{\alpha,m}(x) = O\left(\alpha^{-[(m+1)/2]}\right)$, where $[s]$ denotes the integer part of s .

Proof. We shall prove the result for different values of c separately. First for $c \in \{0, 1\}$, using the identity $x(1 + cx)p'_{\alpha,k}(x, c) = (k - \alpha x)p_{\alpha,k}(x, c)$, we may write

$$\begin{aligned} x(1 + cx)\mu'_{\alpha,m}(x) &= \sum_{k=1}^\infty (k - \alpha x)p_{\alpha,k}(x, c) \int_0^\infty \theta_{\alpha,k}^\rho(t)(t - x)^m dt \\ &\quad - mx(1 + cx) \sum_{k=1}^\infty p_{\alpha,k}(x, c) \int_0^\infty \theta_{\alpha,k}^\rho(t)(t - x)^{m-1} dt \\ &\quad + (-\alpha x)p_{\alpha,0}(x, c)(-x)^m - mx(1 + cx)p_{\alpha,0}(x, c)(-x)^{m-1} \\ &= \sum_{k=1}^\infty p_{\alpha,k}(x, c) \int_0^\infty [(k - \alpha t) + \alpha(t - x)]\theta_{\alpha,k}^\rho(t)(t - x)^m dt \\ &\quad - mx(1 + cx)\mu_{\alpha,m-1}(x) + \alpha p_{\alpha,0}(x, c)(-x)^{m+1}. \end{aligned}$$

Next, using the identity

$$\frac{d}{dt}(t\theta_{\alpha,k}^\rho(t)) = \rho(k - \alpha t)\theta_{\alpha,k}^\rho(t),$$

we have

$$\begin{aligned} x(1 + cx)\mu'_{\alpha,m}(x) &= \sum_{k=1}^{\infty} p_{\alpha,k}(x, c) \int_0^{\infty} \frac{1}{\rho} (t\theta_{\alpha,k}^\rho(t))'(t - x)^m dt \\ &\quad - mx(1 + cx)\mu_{\alpha,m-1}(x) + \alpha\mu_{\alpha,m+1}(x) \\ &= -\frac{m}{\rho} \sum_{k=1}^{\infty} p_{\alpha,k}(x, c) \int_0^{\infty} t\theta_{\alpha,k}^\rho(t)(t - x)^{m-1} dt \\ &\quad - mx(1 + cx)\mu_{\alpha,m-1}(x) + \alpha\mu_{\alpha,m+1}(x) \\ &= -\frac{m}{\rho} \left[(\mu_{\alpha,m}(x) - p_{\alpha,0}(x, c)(-x)^m) + x(\mu_{\alpha,m-1}(x) - p_{\alpha,0}(x, c)(-x)^{m-1}) \right] \\ &\quad - mx(1 + cx)\mu_{\alpha,m-1}(x) + \alpha\mu_{\alpha,m+1}(x) \\ &= -\frac{m}{\rho} \left[\mu_{\alpha,m}(x) + x\mu_{\alpha,m-1}(x) \right] - mx(1 + cx)\mu_{\alpha,m-1}(x) + \alpha\mu_{\alpha,m+1}(x), \end{aligned}$$

which is the required recurrence relation. The consequences (i) and (ii) easily follow from the recurrence relation on using mathematical induction on m . \square

Remark 2.2. From Lemma 2.1, for each $x \in (0, \infty)$ and $c \in \{0, 1\}$ we have

$$\mu_{\alpha,2}(x) = \frac{x\{1 + \rho(1 + cx)\}}{\alpha\rho}; \tag{2}$$

$$\begin{aligned} \mu_{\alpha,4}(x) &= \frac{x(1 + cx)}{\alpha^3\rho^2} \left[3\rho(1 + 2cx) + \rho^2 \{ (1 + 2cx)^2 + 2cx(1 + cx) \} + 2 \right] + \frac{3x^2\{1 + \rho(1 + cx)\}^2}{(\alpha\rho)^2} \\ &\quad + \frac{1}{(\alpha\rho)^3} [3\rho x(1 + cx)\{3 + \rho(1 + 2cx)\} + 6x]. \end{aligned} \tag{3}$$

Corollary 2.3. Let γ and δ be any two positive real numbers and $[a, b] \subset (0, \infty)$ be any bounded interval. Then, for any $m > 0$ there exists a constant M' depending on m only such that

$$\left\| \sum_{k=1}^{\infty} p_{\alpha,k}(x, c) \int_{|t-x|\geq\delta} \theta_{\alpha,k}^\rho(t)e^{\gamma t} dt \right\| \leq M'\alpha^{-m},$$

where $\|\cdot\|$ is the sup-norm over $[a, b]$.

3. Convergence Estimates

Our first main result is the Voronovskaja type theorem for the operators defined in (1).

Theorem 3.1. Let $f \in C_\gamma[0, \infty)$ for some $\gamma > 0$. If f'' exists at a point $x \in [0, \infty)$ then, we have

$$\lim_{\alpha \rightarrow \infty} \alpha(B_\alpha^\rho(f; x, c) - f(x)) = \frac{x\{1 + \rho(1 + cx)\}}{2\rho} f''(x).$$

Proof. From the Taylor’s theorem, we may write

$$f(t) = f(x) + (t - x)f'(x) + \frac{1}{2}f''(x)(t - x)^2 + \psi(t, x)(t - x)^2, \quad t \in [0, \infty) \tag{4}$$

where the function $\psi(t, x) \rightarrow 0$ as $t \rightarrow x$.

Applying $B_\alpha^\rho(\cdot; x, c)$ and taking the limit as $\alpha \rightarrow \infty$ on both sides of (4), we have

$$\begin{aligned} \lim_{\alpha \rightarrow \infty} \alpha(B_\alpha^\rho(f; x, c) - f(x)) &= \lim_{\alpha \rightarrow \infty} \alpha B_\alpha^\rho((t - x); x, c)f'(x) + \frac{f''(x)}{2} \lim_{\alpha \rightarrow \infty} \alpha B_\alpha^\rho((t - x)^2; x, c) \\ &\quad + \lim_{\alpha \rightarrow \infty} \alpha B_\alpha^\rho(\psi(t, x)(t - x)^2; x, c). \end{aligned}$$

In view of Remark 2.2, we get

$$\lim_{\alpha \rightarrow \infty} \alpha B_\alpha^\rho((t - x); x, c) = 0 \tag{5}$$

and

$$\lim_{\alpha \rightarrow \infty} \alpha B_\alpha^\rho((t - x)^2; x, c) = \frac{x\{1 + \rho(1 + cx)\}}{\rho}. \tag{6}$$

Now, we prove that $\alpha B_\alpha^\rho(\psi(t, x)(t - x)^2; x, c) \rightarrow 0$, as $\alpha \rightarrow \infty$. From the Cauchy-Schwarz inequality, we have

$$B_\alpha^\rho(\psi(t, x)(t - x)^2; x, c) \leq \sqrt{B_\alpha^\rho(\psi^2(t, x); x, c)} \sqrt{B_\alpha^\rho((t - x)^4; x, c)}. \tag{7}$$

Since $\psi(t, x) \rightarrow 0$ as $t \rightarrow x$, for a given $\epsilon > 0$ there exists $\delta > 0$ such that $|\psi(t, x)| < \epsilon$ whenever $|t - x| < \delta$. For $|t - x| \geq \delta$, there exists M_1 such that $|\psi(t, x)| \leq M_1 e^{\gamma t}$.

Let $\chi_\delta(t)$ denote the characteristic function of $(x - \delta, x + \delta)$. Then

$$\begin{aligned} B_\alpha^\rho(\psi^2(t, x); x, c) &\leq B_\alpha^\rho(\psi^2(t, x)\chi_\delta(t); x, c) + B_\alpha^\rho(\psi^2(t, x)(1 - \chi_\delta(t)); x, c) \\ &\leq \epsilon^2 B_\alpha^\rho(1; x, c) + M_1^2 B_\alpha^\rho(e^{2\gamma t}(1 - \chi_\delta(t)); x, c) \\ &\leq \epsilon^2 + M_2 \alpha^{-m}, \quad \text{in view of Corollary 2.3.} \end{aligned}$$

Hence, we have

$$\lim_{\alpha \rightarrow \infty} B_\alpha^\rho(\psi^2(t, x); x, c) = 0. \tag{8}$$

Further from Remark 2.2,

$$\lim_{\alpha \rightarrow \infty} \alpha^2 B_\alpha^\rho((t - x)^4; x, c) = 3x^2 \left(\frac{1}{\rho} + (1 + cx) \right)^2, \tag{9}$$

which is a finite quantity for each fixed $x \in [0, \infty)$ thus from (7)-(9), we get

$$\lim_{\alpha \rightarrow \infty} \alpha B_\alpha^\rho(\psi(t, x)(t - x)^2; x, c) = 0. \tag{10}$$

Combining (5), (6) and (10), we obtain the desired result. \square

Example 3.2. For $\alpha = 20, 50, 100$, the convergence of the operators $B_\alpha^\rho(f; x, c)$ to the function $f(x) = x^8 - 6x^7 + 5x^4 - 4x^3 + 2x^2 + 3$ (blue) is illustrated for $c = 0, \rho = 1$ (green) and $c = 1, \rho = 1$ (red) in figures 1 – 3, respectively.

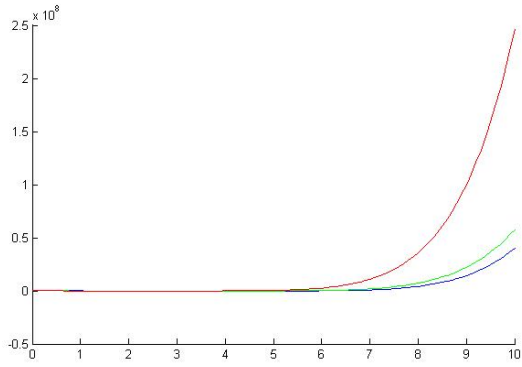


Figure 1

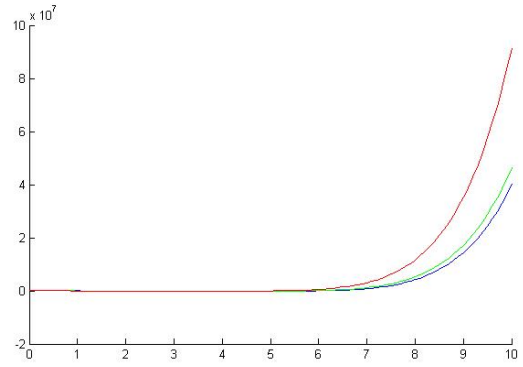


Figure 2

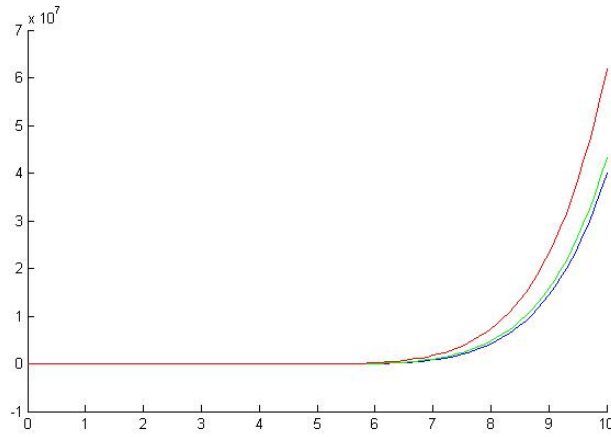


Figure 3

Example 3.3. For $\alpha = 20, 50, 100$, the convergence of the operators $B_\alpha^\rho(f; x, c)$ to the function $f(x) = x^4 e^{-2\pi x}$ (blue) is illustrated for $c = 0, \rho = 1$ (green) and $c = 1, \rho = 1$ (red) in figures 4 – 6, respectively.

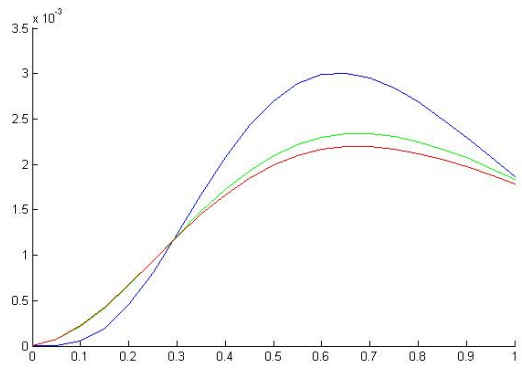


Figure 4

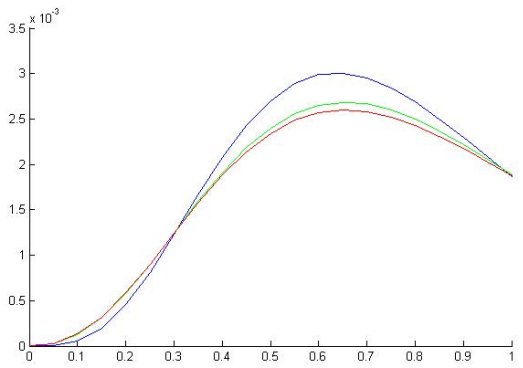


Figure 5

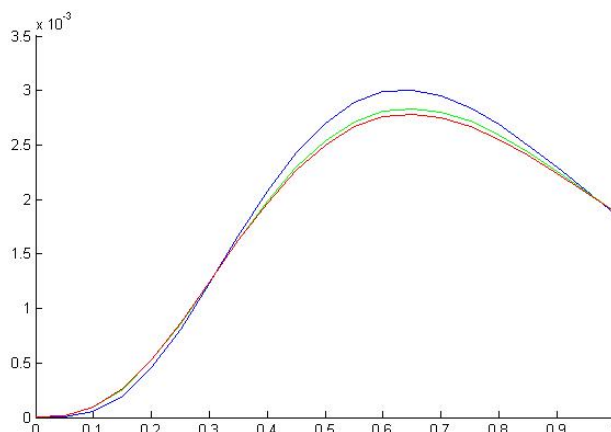


Figure 6

In the following theorem, we show that the derivative $\left(\frac{d}{d\omega} B_\alpha^\rho(f; \omega, c)\right)_{\omega=x}$ is also an approximation process for $f'(x)$.

Theorem 3.4. Let $f \in C_\gamma[0, \infty)$ for some $\gamma > 0$. If f' exists at a point $x \in (0, \infty)$, then we have

$$\lim_{\alpha \rightarrow \infty} \left(\frac{d}{d\omega} B_\alpha^\rho(f; \omega, c)\right)_{\omega=x} = f'(x).$$

Proof. By our hypothesis, we have

$$f(t) = f(x) + (t - x)f'(x) + \psi(t, x)(t - x), \quad t \in [0, \infty),$$

where the function $\psi(t, x) \rightarrow 0$ as $t \rightarrow x$.

From the above equation, we can write

$$\begin{aligned} \left(\frac{d}{d\omega} B_\alpha^\rho(f(t); \omega, c)\right)_{\omega=x} &= f(x) \left(\frac{d}{d\omega} B_\alpha^\rho(1; \omega, c)\right)_{\omega=x} + f'(x) \left(\frac{d}{d\omega} B_\alpha^\rho((t - x); \omega, c)\right)_{\omega=x} \\ &\quad + \left(\frac{d}{d\omega} B_\alpha^\rho(\psi(t, x)(t - x); \omega, c)\right)_{\omega=x} \\ &= f'(x) + \left(\frac{d}{d\omega} B_\alpha^\rho(\psi(t, x)(t - x); \omega, c)\right)_{\omega=x}. \end{aligned}$$

Taking limit as $\alpha \rightarrow \infty$, the result follows immediately, if we show that

$$\lim_{\alpha \rightarrow \infty} \left(\frac{d}{d\omega} B_\alpha^\rho(\psi(t, x)(t - x); \omega, c)\right)_{\omega=x} = 0.$$

By using the identity $x(1 + cx) \left(\frac{d}{d\omega} (p_{\alpha, k}(\omega, c))\right)_{\omega=x} = (k - \alpha x) p_{\alpha, k}(x, c)$, we have

$$\begin{aligned} &\left| \left(\frac{d}{d\omega} B_\alpha^\rho(\psi(t, x)(t - x); \omega, c)\right)_{\omega=x} \right| \\ &= \left| \left(\sum_{k=1}^{\infty} \frac{d}{d\omega} (p_{\alpha, k}(\omega, c)) \int_0^\infty \theta_{\alpha, k}^\rho(t) \psi(t, x)(t - x) dt + \frac{d}{d\omega} (p_{\alpha, 0}(\omega, c)) \psi(0, x)(-x) \right)_{\omega=x} \right| \\ &\leq \sum_{k=1}^{\infty} \frac{|k - \alpha x|}{x(1 + cx)} p_{\alpha, k}(x, c) \int_0^\infty \theta_{\alpha, k}^\rho(t) |\psi(t, x)| |t - x| dt + \left| \left(\frac{d}{d\omega} \phi_{\alpha, c}(\omega)\right)_{\omega=x} \right| |\psi(0, x)| x \\ &=: I_1 + I_2. \end{aligned} \tag{11}$$

Since $\psi(t, x) \rightarrow 0$ as $t \rightarrow x$, for a given $\epsilon > 0$ there exists $\delta > 0$ such that $|\psi(t, x)| < \epsilon$ whenever $|t - x| < \delta$. For $|t - x| \geq \delta$, we have $|\psi(t, x)(t - x)| \leq M_1 e^{\gamma t}$, for some $M_1 > 0$. Thus, from equation (11) we may write

$$\begin{aligned} I_1 &\leq \sum_{k=1}^{\infty} \left(\frac{|(k - \alpha x)|}{x(1 + cx)} \right) p_{\alpha,k}(x, c) \left(\epsilon \int_{|t-x|<\delta} \theta_{\alpha,k}^{\rho}(t) |t - x| dt \right. \\ &\quad \left. + M_1 \int_{|t-x|\geq\delta} \theta_{\alpha,k}^{\rho}(t) e^{\gamma t} dt \right) \\ &:= J_1 + J_2. \end{aligned} \tag{12}$$

Using Schwarz inequality for integration and then for summation, we can write

$$\begin{aligned} J_1 &\leq \epsilon \sum_{k=1}^{\infty} \left(\frac{|(k - \alpha x)|}{x(1 + cx)} \right) p_{\alpha,k}(x, c) \int_{|t-x|<\delta} \theta_{\alpha,k}^{\rho}(t) |t - x| dt \\ &\leq \frac{\epsilon}{x(1 + cx)} \sum_{k=1}^{\infty} |k - \alpha x| p_{\alpha,k}(x, c) \left(\int_0^{\infty} \theta_{\alpha,k}^{\rho}(t) (t - x)^2 dt \right)^{1/2} \\ &\leq \frac{\epsilon}{x(1 + cx)} \sum_{k=1}^{\infty} |k - \alpha x| p_{\alpha,k}(x, c) \left(\int_0^{\infty} \theta_{\alpha,k}^{\rho}(t) (t - x)^2 dt \right)^{1/2} \\ &\leq \frac{\epsilon}{x(1 + cx)} \left(\sum_{k=1}^{\infty} p_{\alpha,k}(x, c) (k - \alpha x)^2 \right)^{1/2} \left(\sum_{k=1}^{\infty} p_{\alpha,k}(x, c) \int_0^{\infty} \theta_{\alpha,k}^{\rho}(t) (t - x)^2 dt \right)^{1/2} \\ &= \frac{\epsilon}{x(1 + cx)} \left(\alpha^2 \left(\sum_{k=0}^{\infty} p_{\alpha,k}(x, c) \left(\frac{k}{\alpha} - x \right)^2 - x^2 p_{\alpha,0}(x, c) \right) \right)^{1/2} (\mu_{\alpha,2}(x) - x^2 p_{\alpha,0}(x, c))^{1/2} \\ &= \epsilon \left\{ \alpha \cdot O\left(\frac{1}{\alpha^{1/2}} \right) \right\} O\left(\frac{1}{\alpha^{1/2}} \right), \text{ in view of Lemma 2.1} \\ &= \epsilon \cdot O(1). \end{aligned}$$

Since $\epsilon > 0$ is arbitrary, $J_1 \rightarrow 0$ as $\alpha \rightarrow \infty$. Next

$$\begin{aligned} J_2 &\leq \frac{M_1}{x(1 + cx)} \left(\sum_{k=1}^{\infty} (k - \alpha x)^2 p_{\alpha,k}(x, c) \right)^{1/2} \left(\int_0^{\infty} \theta_{\alpha,k}^{\rho}(t) dt \right)^{1/2} \\ &\quad \times \left(\sum_{k=1}^{\infty} p_{\alpha,k}(x, c) \int_{|t-x|\geq\delta} \theta_{\alpha,k}^{\rho}(t) e^{2\gamma t} dt \right)^{1/2} \\ &\leq \frac{M_1}{x(1 + cx)} \left(\alpha^2 \sum_{k=1}^{\infty} p_{\alpha,k}(x, c) \left(\frac{k}{\alpha} - x \right)^2 \right)^{1/2} \left(\sum_{k=1}^{\infty} p_{\alpha,k}(x, c) \int_{|t-x|\geq\delta} \theta_{\alpha,k}^{\rho}(t) e^{2\gamma t} dt \right)^{1/2} \\ &= \left\{ \alpha \cdot O\left(\frac{1}{\alpha^{1/2}} \right) \right\} M_1' \alpha^{-m} = O\left(\frac{1}{\alpha^{\frac{2m-1}{2}}} \right), \text{ for any } m > 0. \end{aligned}$$

By taking $m > 1/2$, $J_2 \rightarrow 0$ as $\alpha \rightarrow \infty$. Combining the estimates of J_1 and J_2 , we get $I_1 \rightarrow 0$ as $\alpha \rightarrow \infty$. Finally, we show that $I_2 \rightarrow 0$ as $\alpha \rightarrow \infty$. Since $|\psi(0, x)x| \leq M_2$ and for $c = 0, 1$, we get $\phi'_{\alpha,c}(x) \rightarrow 0$ as $\alpha \rightarrow \infty$, it follows that $I_2 \rightarrow 0$ as $\alpha \rightarrow \infty$. By combining the estimates of I_1 and I_2 , we get the required result. \square

Example 3.5. For $\alpha = 50, 100, 140$, the convergence of the operators $\left(\frac{d}{d\omega} B_{\alpha}^{\rho}(f; \omega, c) \right)_{\omega=x}$ to the function $\frac{d}{dx} f(x) = \frac{d}{dx} (x^8 - 6x^7 + 5x^4 - 4x^3 + 2x^2 + 3)$ (blue) is illustrated for $c = 0, \rho = 1$ (green) and $c = 1, \rho = 1$ (red) in figures 7–9, respectively.

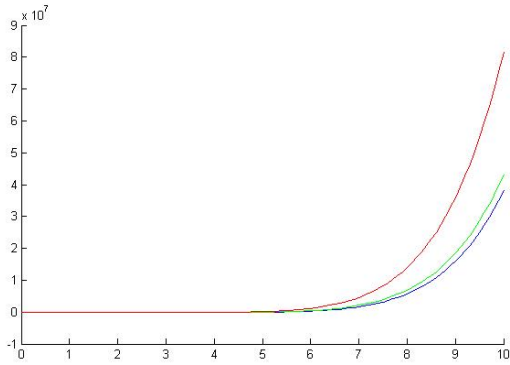


Figure 7

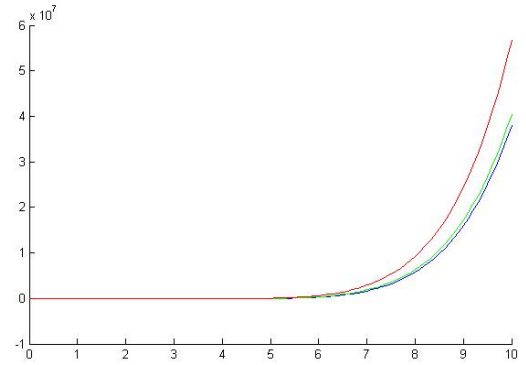


Figure 8

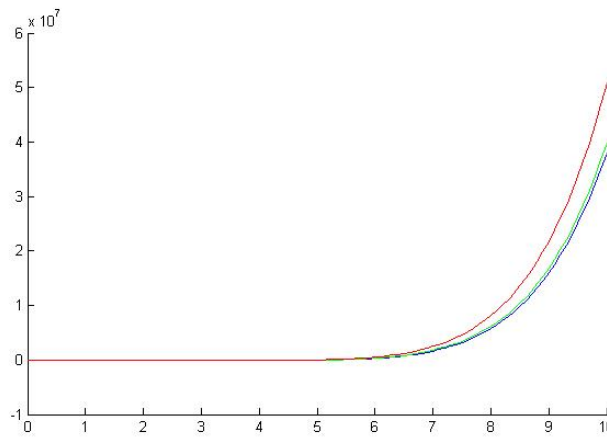


Figure 9

Example 3.6. For $\alpha = 50, 100, 140$, the convergence of the operators $(\frac{d}{d\omega} B_{\alpha}^{\rho}(f; \omega, c))_{\omega=x}$ to the function $\frac{d}{dx} f(x) = \frac{d}{dx}(x^4 e^{-2\pi x})$ (blue) is illustrated for $c = 0, \rho = 1$ (green) and $c = 1, \rho = 1$ (red) in figures 10 – 12, respectively.

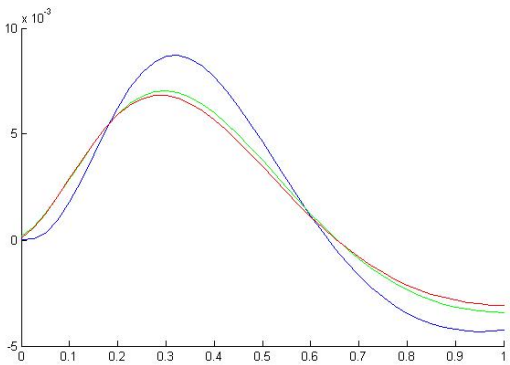


Figure 10

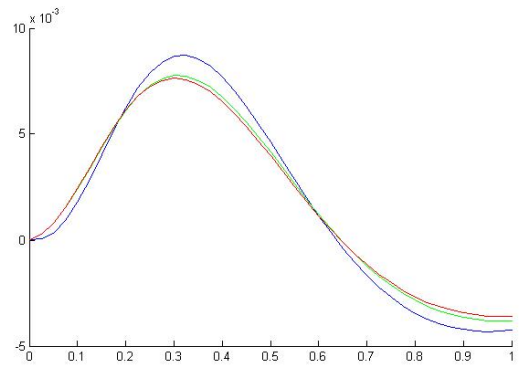


Figure 11

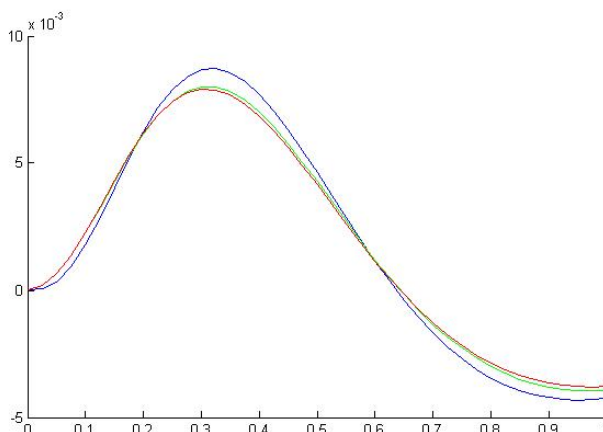


Figure 12

Next, we prove Voronovskaja type asymptotic formula for $\left(\frac{d}{d\omega} B_\alpha^\rho(f; \omega, c)\right)_{\omega=x}$.

Theorem 3.7. Let $f \in C_\gamma[0, \infty)$ admitting the derivative of 3rd order at a fixed point $x \in (0, \infty)$, we have

$$\lim_{\alpha \rightarrow \infty} \alpha \left(\left(\frac{d}{d\omega} B_\alpha^\rho(f; \omega, c) - f'(x) \right)_{\omega=x} \right) = f''(x) \left(cx + \frac{1}{2} \left(\frac{1}{\rho} + 1 \right) \right) + \frac{f'''(x)}{2} \left(cx^2 + \left(\frac{1}{\rho} + 1 \right) x \right).$$

Proof. From the Taylor’s theorem, we may write

$$f(t) = \sum_{k=0}^3 \frac{(t-x)^k}{k!} f^{(k)}(x) + \psi(t, x)(t-x)^3, t \in [0, \infty), \tag{13}$$

where $\lim_{t \rightarrow x} \psi(t, x) = 0$.

From equation (13), we obtain

$$\begin{aligned} \left(\frac{d}{d\omega} B_\alpha^\rho(f(t); \omega, c) \right)_{\omega=x} &= f'(x) \left(\frac{d}{d\omega} (B_\alpha^\rho(t; \omega, c) - x) \right)_{\omega=x} \\ &+ \frac{f''(x)}{2} \left(\frac{d}{d\omega} (B_\alpha^\rho(t^2; \omega, c) - 2xB_\alpha^\rho(t; \omega, c) + x^2) \right)_{\omega=x} \\ &+ \frac{f'''(x)}{3!} \left(\frac{d}{d\omega} (B_\alpha^\rho(t^3; \omega, c) - 3xB_\alpha^\rho(t^2; \omega, c) + 3x^2B_\alpha^\rho(t; \omega, c) - x^3) \right)_{\omega=x} \\ &+ \left(\frac{d}{d\omega} (B_\alpha^\rho(\psi(t, x)(t-x)^3; \omega, c) \right)_{\omega=x}. \end{aligned}$$

Using Lemma 2.1, we get

$$\begin{aligned} \left(\frac{d}{d\omega} B_\alpha^\rho(f(t); \omega, c) \right)_{\omega=x} &= f'(x) + \frac{f''(x)}{2} \left\{ 2x \left(\frac{c}{\alpha} + 1 \right) + \frac{1}{\alpha} \left(\frac{1}{\rho} + 1 \right) - 2x \right\} + \frac{f'''(x)}{3!} \left\{ \frac{3}{\alpha} \left(1 + \frac{2c}{\alpha} \right) x \right. \\ &\left. \left(cx + 1 + \frac{1}{\rho} \right) + \frac{1}{\alpha^2} \left(\frac{2}{\rho^2} + \frac{3}{\rho} + 1 \right) \right\} + \left(\frac{d}{d\omega} (B_\alpha^\rho(\psi(t, x)(t-x)^3; \omega, c) \right)_{\omega=x}. \end{aligned}$$

Taking limit as $\alpha \rightarrow \infty$ on both sides of the above equation, we have

$$\begin{aligned} \lim_{\alpha \rightarrow \infty} \alpha \left(\left(\frac{d}{d\omega} B_\alpha^\rho(f; \omega, c) \right)_{\omega=x} - f'(x) \right) &= f''(x) \left(cx + \frac{1}{2} \left(\frac{1}{\rho} + 1 \right) \right) + \frac{f'''(x)}{2} \left(cx^2 + \left(\frac{1}{\rho} + 1 \right) x \right) \\ &+ \lim_{\alpha \rightarrow \infty} \alpha \left(\frac{d}{d\omega} (B_\alpha^\rho(\psi(t, x)(t-x)^3; \omega, c) \right)_{\omega=x}. \end{aligned}$$

Proceeding in the same manner as in Theorem 3.4, we can easily show that

$$\lim_{\alpha \rightarrow \infty} \alpha \left(\frac{d}{d\omega} (B_\alpha^\rho(\psi(t, x)(t - x)^3; \omega, c)) \right)_{\omega=x} = 0,$$

since $\lim_{\alpha \rightarrow \infty} \alpha^3 (B_\alpha^\rho(t - x)^6; x, c)$ is finite for each $x \in [0, \infty)$ in view of the consequences (i) and (ii) of Lemma 2.1. Thus, the proof is completed. \square

For $f \in C_B[0, \infty)$ (the space of all bounded and uniformly continuous functions on $[0, \infty)$), the Peetre’s K -functional is defined as

$$K_2(f, \delta) = \inf\{\|f - g\| + \delta \|g''\|; g \in C_B^2[0, \infty)\}, \tag{14}$$

where $\delta > 0$ and $C_B^2[0, \infty) = \{g \in C_B[0, \infty) : g', g'' \in C_B[0, \infty)\}$. By Devore and Lorentz ([5], p.177, Theorem 2.4), there exists an absolute constant $C > 0$ such that

$$K_2(f, \delta) \leq C\omega_2(f, \sqrt{\delta}), \tag{15}$$

where the second order modulus of continuity is defined as

$$\omega_2(f, \sqrt{\delta}) = \sup_{0 < h \leq \sqrt{\delta}} \sup_{x \in [0, \infty)} |f(x + 2h) - 2f(x + h) + f(x)|.$$

Theorem 3.8. *Let $f \in C_B[0, \infty)$ and $x \geq 0$. Then, there exists a constant $C > 0$ such that*

$$|B_\alpha^\rho(f; x, c) - f(x)| \leq C\omega_2 \left(f, \sqrt{\frac{x\{1 + \rho(1 + cx)\}}{\alpha\rho}} \right).$$

Proof. Let $g \in C_B^2[0, \infty)$. From the Taylor’s theorem, we may write

$$g(t) = g(x) + (t - x)g'(x) + \int_x^t (t - v)g''(v)dv,$$

which implies that

$$|B_\alpha^\rho(g; x, c) - g(x)| = \left| B_\alpha^\rho \left(\int_x^t (t - v)g''(v)dv; x, c \right) \right|.$$

Since

$$\left| \int_x^t (t - v)g''(v)dv \right| \leq (t - x)^2 \|g''\|,$$

by Remark 2.2, we have

$$|B_\alpha^\rho(g; x, c) - g(x)| \leq \frac{x\{1 + \rho(1 + cx)\}}{\alpha\rho} \|g''\|.$$

From (1) it follows that

$$|B_\alpha^\rho(f; x, c)| \leq \|f\|.$$

Hence

$$\begin{aligned} |B_\alpha^\rho(f; x, c)(f, x) - f(x)| &\leq |B_\alpha^\rho(f - g; x, c) - (f - g)(x)| + |B_\alpha^\rho(g; x, c) - g(x)| \\ &\leq 2\|f - g\| + \frac{x\{1 + \rho(1 + cx)\}}{\alpha\rho} \|g''\|. \end{aligned} \tag{16}$$

Taking infimum on the right hand side over all $g \in C_B^2[0, \infty)$ and using (15), we obtain the desired result. Hence, the proof is completed. \square

Let us now consider the Lipschitz-type space [15]:

$$Lip_M^*(r) := \left\{ f \in C_B[0, \infty) : |f(t) - f(x)| \leq M \frac{|t-x|^r}{(t+x)^{\frac{r}{2}}}; x, t \in (0, \infty) \right\},$$

where M is a positive constant and $r \in (0, 1]$.

Theorem 3.9. *Let $f \in Lip_M^*(r)$. Then, for all $x > 0$, we have*

$$|B_\alpha^\rho(f; x, c) - f(x)| \leq M \left(\frac{1 + \rho(1 + cx)}{\alpha\rho} \right)^{\frac{r}{2}}.$$

Proof. Initially for $r = 1$, we may write

$$\begin{aligned} |B_\alpha^\rho(f; x, c) - f(x)| &\leq \sum_{k=0}^{\infty} p_{\alpha,k}(x, c) \int_0^{\infty} \theta_{\alpha,k}^\rho(t) |f(t) - f(x)| dt \\ &\leq M \sum_{k=0}^{\infty} p_{\alpha,k}(x, c) \int_0^{\infty} \theta_{\alpha,k}^\rho(t) \frac{|t-x|}{\sqrt{t+x}} dt. \end{aligned}$$

Using the fact that $\frac{1}{\sqrt{t+x}} < \frac{1}{\sqrt{x}}$ and the Cauchy-Schwarz inequality, the above inequality implies that

$$|B_\alpha^\rho(f; x, c) - f(x)| \leq \frac{M}{\sqrt{x}} \sum_{k=0}^{\infty} p_{\alpha,k}(x, c) \int_0^{\infty} \theta_{\alpha,k}^\rho(t) |t-x| dt = \frac{M}{\sqrt{x}} B_\alpha^\rho(|t-x|; x, c) \leq M \left(\sqrt{\frac{1 + \rho(1 + cx)}{\alpha\rho}} \right),$$

which proves the required result for $r = 1$. Now for $r \in (0, 1)$, applying the Hölder inequality with $p = \frac{1}{r}$ and $q = \frac{1}{1-r}$, we have

$$\begin{aligned} |B_\alpha^\rho(f; x, c) - f(x)| &\leq \sum_{k=0}^{\infty} p_{\alpha,k}(x, c) \int_0^{\infty} \theta_{\alpha,k}^\rho(t) |f(t) - f(x)| dt \\ &\leq \left\{ \sum_{k=0}^{\infty} p_{\alpha,k}(x, c) \left(\int_0^{\infty} \theta_{\alpha,k}^\rho(t) |f(t) - f(x)| dt \right)^{\frac{1}{r}} \right\}^r \\ &\leq \left\{ \sum_{k=0}^{\infty} p_{\alpha,k}(x, c) \int_0^{\infty} \theta_{\alpha,k}^\rho(t) |f(t) - f(x)|^{\frac{1}{r}} dt \right\}^r \\ &\leq M \left\{ \sum_{k=0}^{\infty} p_{\alpha,k}(x, c) \int_0^{\infty} \theta_{\alpha,k}^\rho(t) \frac{|t-x|}{\sqrt{t+x}} dt \right\}^r \\ &\leq \frac{M}{x^{\frac{r}{2}}} \left\{ \sum_{k=0}^{\infty} p_{\alpha,k}(x, c) \int_0^{\infty} \theta_{\alpha,k}^\rho(t) |t-x| dt \right\}^r \\ &\leq \frac{M}{x^{\frac{r}{2}}} (B_\alpha^\rho(|t-x|; x, c))^r \leq M \left(\frac{1 + \rho(1 + cx)}{\alpha\rho} \right)^{\frac{r}{2}}. \end{aligned}$$

Thus, the proof is completed. \square

Let $H_{x^2}[0, \infty)$ be space of all functions f defined on $[0, \infty)$ with the property $|f(x)| \leq M_f(1 + x^2)$, where M_f is a constant depending only on f . By $C_{x^2}[0, \infty)$, we denote the subspace of all continuous functions from $H_{x^2}[0, \infty)$. If $f \in C_{x^2}[0, \infty)$ and $\lim_{x \rightarrow \infty} |f(x)|(1 + x^2)^{-1}$ exists, we write $f \in C_{x^2}^*[0, \infty)$. The norm on $f \in C_{x^2}^*[0, \infty)$ is given by

$$\|f\|_{x^2} := \sup_{x \in [0, \infty)} \frac{|f(x)|}{1 + x^2}.$$

On the closed interval $[0, a]$. for any $a > 0$, we define the usual modulus of continuity of f as

$$\omega_a(f, \delta) = \sup_{|t-x|\leq\delta} \sup_{x,t\in[0,a]} |f(t) - f(x)|.$$

Theorem 3.10. Let $f \in C_{x^2}[0, \infty)$ and $\omega_{a+1}(f, \delta)$ be its modulus of continuity on the finite interval $[0, a + 1] \subset [0, \infty)$. Then for any $\alpha > 0$, we have

$$\| B_\alpha^\rho(f; x, c) - f(x) \|_{C[0,a]} \leq 4M_f(1 + a^2)\mu_{\alpha,2}(a) + 2\omega_{a+1}\left(f, \sqrt{\mu_{\alpha,2}(a)}\right),$$

where $\mu_{\alpha,2}(a) = \frac{a\{1 + \rho(1 + ca)\}}{\alpha\rho}$.

Proof. From ([10], p.378), for $x \in [0, a]$ and $t \in [0, \infty)$, we have

$$|f(t) - f(x)| \leq 4M_f(1 + a^2)(t - x)^2 + \left(1 + \frac{|t - x|}{\delta}\right)\omega_{a+1}(f, \delta), \delta > 0.$$

Applying $B_\alpha^\rho(\cdot; x, c)$ and then Cauchy-Schwarz inequality to the above inequality, we get

$$\begin{aligned} |B_\alpha^\rho(f; x, c) - f(x)| &\leq 4M_f(1 + a^2)B_\alpha^\rho((t - x)^2; x, c) + \omega_{a+1}\left(1 + \frac{1}{\delta}B_\alpha^\rho(|t - x|; x, c)\right) \\ &\leq 4M_f(1 + a^2)\mu_{\alpha,2}(a) + \omega_{a+1}\left(1 + \frac{1}{\delta}\sqrt{\mu_{\alpha,2}(a)}\right). \end{aligned}$$

By choosing $\delta = \sqrt{\mu_{\alpha,2}(a)}$, we obtain the desired result. \square

Theorem 3.11. For each $f \in C_{x^2}^*[0, \infty)$, we have

$$\lim_{\alpha \rightarrow \infty} \| B_\alpha^\rho(f) - f \|_{x^2} = 0.$$

Proof. From the Korovkin theorem, we see that it is sufficient to verify the following three conditions

$$\lim_{\alpha \rightarrow \infty} \| B_\alpha^\rho(t^k; x, c) - x^k \|_{x^2} = 0, \quad k = 0, 1, 2. \tag{17}$$

Since $B_\alpha^\rho(1; x, c) = 1$, the condition in (17) holds for $k = 0$.

By Lemma 2.1, we have for $\alpha > 0$

$\| B_\alpha^\rho(t; x, c) - x \|_{x^2} = 0$, which implies that the condition in (17) holds for $k = 1$.

Similarly, we can write for $\alpha > 0$

$$\begin{aligned} \| B_\alpha^\rho(t^2; x, c) - x^2 \|_{x^2} &\leq \left\| \frac{\rho x(1 + cx) + x}{\rho\alpha} \right\|_{x^2} \leq \frac{\rho + 1}{\rho\alpha} \sup_{x \in [0, \infty)} \frac{x}{1 + x^2} + \frac{c}{\alpha} \sup_{x \in [0, \infty)} \frac{x^2}{1 + x^2} \\ &\leq \left(1 + \frac{1}{\rho} + c\right) \frac{1}{\alpha} \end{aligned}$$

which implies that $\lim_{\alpha \rightarrow \infty} \| B_\alpha^\rho(t^2; x, c) - x^2 \|_{x^2} = 0$, the equation (17) holds for $k = 2$. This completes the proof. \square

Let $f \in C_{x^2}^*[0, \infty)$. The weighted modulus of continuity is defined as :

$$\Omega_2(f, \delta) = \sup_{x \geq 0, 0 < h \leq \delta} \frac{|f(x + h) - f(x)|}{1 + (x + h)^2}.$$

Lemma 3.12. [10] Let $f \in C_{x^2}^*[0, \infty)$, then:

- (i) $\Omega(f, \delta)$ is a monotone increasing function of δ ;
- (ii) $\lim_{\delta \rightarrow 0^+} \Omega(f, \delta) = 0$;
- (iii) for each $m \in \mathbb{N}$, $\Omega(f, m\delta) \leq m\Omega(f, \delta)$;
- (iv) for each $\lambda \in [0, \infty)$, $\Omega(f, \lambda\delta) \leq (1 + \lambda)\Omega(f, \delta)$.

Theorem 3.13. Let $f \in C_{x^2}^*[0, \infty)$, then there exists a positive constant K such that

$$\sup_{x \in (0, \infty)} \frac{|B_\alpha^\rho(f; x, c) - f(x)|}{(1 + x^2)^{\frac{5}{2}}} \leq K\Omega\left(f, \frac{1}{\alpha}\right).$$

Proof. For $t > 0, x \in [0, \infty)$ and $\delta > 0$, by definition of $\Omega(f, \delta)$ and Lemma 3.12, we get

$$\begin{aligned} |f(t) - f(x)| &\leq (1 + (x + |x - t|^2))\Omega(f, |t - x|) \\ &\leq 2(1 + x^2)(1 + (t - x)^2)\left(1 + \frac{|t - x|}{\delta}\right)\Omega(f, \delta). \end{aligned}$$

Since B_α^ρ is linear and positive, we have

$$|B_\alpha^\rho(f; x, c) - f(x)| \leq 2(1 + x^2)\Omega(f, \delta)\left\{1 + B_\alpha^\rho((t - x)^2; x, c) + B_\alpha^\rho\left((1 + (t - x)^2)\frac{|t - x|}{\delta}; x, c\right)\right\}. \tag{18}$$

Using (2), we have

$$B_\alpha^\rho((t - x)^2; x, c) \leq K_1 \frac{(1 + x^2)}{\alpha}, \text{ for some positive number } K_1. \tag{19}$$

Applying Cauchy-Schwarz inequality to the second term of equation (18), we have

$$\begin{aligned} B_\alpha^\rho\left((1 + (t - x)^2)\frac{|t - x|}{\delta}; x, c\right) &\leq \frac{1}{\delta} \sqrt{B_\alpha^\rho((t - x)^2; x, c)} \\ &\quad + \frac{1}{\delta} \sqrt{B_\alpha^\rho((t - x)^4; x, c)} \sqrt{B_\alpha^\rho((t - x)^2; x, c)}. \end{aligned} \tag{20}$$

By using Lemma 2.1, there exists a positive constant K_2 such that

$$\sqrt{B_\alpha^\rho((t - x)^4; x, c)} \leq K_2 \frac{(1 + x^2)}{\alpha}. \tag{21}$$

Combining the estimates of (18)-(21) and taking $K = 2(1 + K_1 + \sqrt{K_1} + K_2 \sqrt{K_1})$, $\delta = \frac{1}{\sqrt{\alpha}}$, we obtain the required result. \square

Acknowledgements The last author is thankful to the "Council of Scientific and Industrial Research" (Grant code: 09/143(0836)/2013-EMR-1) India for financial support to carry out the above research work.

References

- [1] U. Abel, V. Gupta and R. N. Mohapatra, *Local approximation by a variant of Bernstein Durrmeyer operators*, Nonlinear Analysis Series A: Theory, Methods Appl. **68** (11) (2008), 3372–3381.
- [2] R. P. Agarwal and V. Gupta, *On q -analogue of a complex summation-integral type operators in compact disks*, J. Inequal. Appl. 2012 (1) (2012), 111.
- [3] P. N. Agrawal and A. J. Mohammad, *On L_p -inverse theorem for a linear combination of a new sequence of linear positive operators*, Soochow J. Math. **32** (3) (2006), 399–411.
- [4] A. Aral, V. Gupta and R. P. Agarwal, *Applications of q Calculus in Operator Theory*, Springer (2013).
- [5] R. A. DeVore and G. G. Lorentz, *Constructive Approximation*, Springer, Berlin (1993).
- [6] Z. Finta, N. K. Govil and V. Gupta, *Some results on modified Szász-Mirakjan operators*, J. Math. Anal. Appl. **327** (2) (2007), 1284–1296.

- [7] S. G. Gal and V. Gupta, *Quantative estimates for a new complex Durrmeyer operator in compact disks*, *Appl. Math. Comput.* **218**(6) (2011), 2944–2951.
- [8] V. Gupta, *An Estimate on the convergence of Baskakov Bézier operators*, *J Math. Anal. Appl.* **312** (2005), 280–288.
- [9] V. Gupta and R. P. Agarwal, *Convergence Estimates in Approximation Theory*, Springer, Cham.(2014).
- [10] V. Gupta and A. Aral, *Convergence of the q -analogue of Szász-Beta operators*, *Appl. Math. Comput.* **216** (2010) 374–380.
- [11] V. Gupta and G. Tachev, *Approximation with Positive Linear Operators and Linear Combinations*, (Series: Developments in Mathematics 50), Springer International Publishing, 2017, ISBN 978-3-319-58794-3.
- [12] G. V. Milovanovic, D. S. Mitrinovic and Th. M. Rassias, *Topics in Polynomials: Extrermal Problems, Inequalities, Zeros*, World Scientific Publishing Co., Singapore, New Jersey, London, (1994).
- [13] G. V. Milovanovic and M.Th. Rassias (eds.) , *Analytic Number Theory, Approximation Theory and Special Functions*, Springer, New York, (2014).
- [14] G.V. Milovanovic and M. Th. Rassias, *Some properties of a hypergeometric function which appear in an approximation problem*, *J. Global Optimization* **57** (2013), 1173–1192.
- [15] M. A. Özarslan, O. Duman, *Local approximation behaviour of modified SMK operators*, *Miskolc Math. Notes* **11** (2010), 87–99.
- [16] R. Păltănea, *Simultaneous approximation by a class of Szász-Mirakjan operators*, *J. Appl. Funct. Anal.* **9** (3-4) (2014), 356–368.
- [17] R. S. Phillips, *An inversion formula for Laplace transforms and semi-group of operators*, *Annals. Math.* **59** (1954), 325–356.
- [18] R. Păltănea, *Modified Szász-Mirakjan operators of integral form*, *Carpathian J. Math.* **24** (2008), 378–385.